



Bishops Square, London, E1

BUTLER & STAG

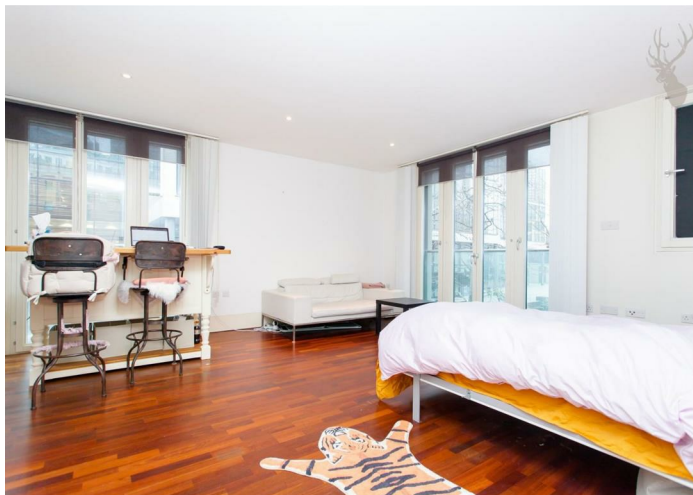


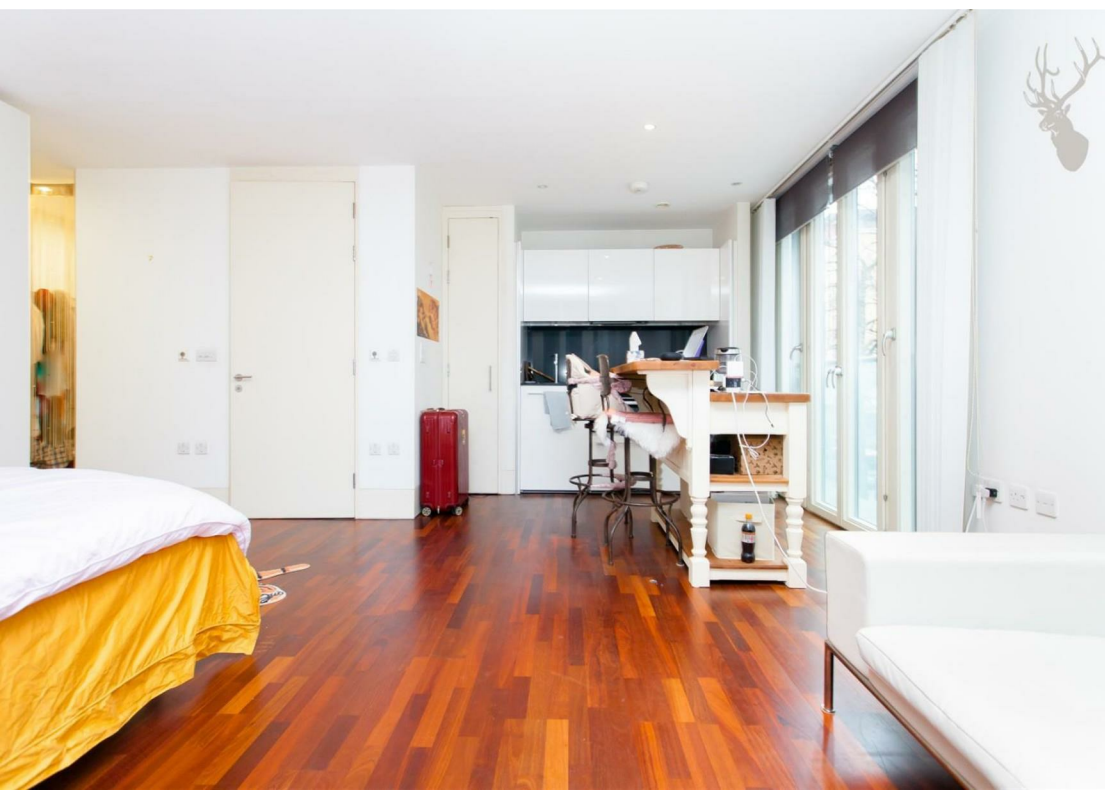
A modern first floor studio apartment boasting luxurious interiors and an outstanding location moments from Spitalfields Market and the financial heart of the City.



- Studio Apartment
- Available 6th August
- Communal Lift
- Part Furnished
- Modern & Spacious
- First Floor

Internally the property offers a spacious living area with pull down bed. modern fitted kitchen with additional island, ample storage and shower room. Bishops Square is situated in the City in-between Bishopsgate and Commercial Street and only moments from the famous restaurants of Brick Lane and popular Spitalfields Market.

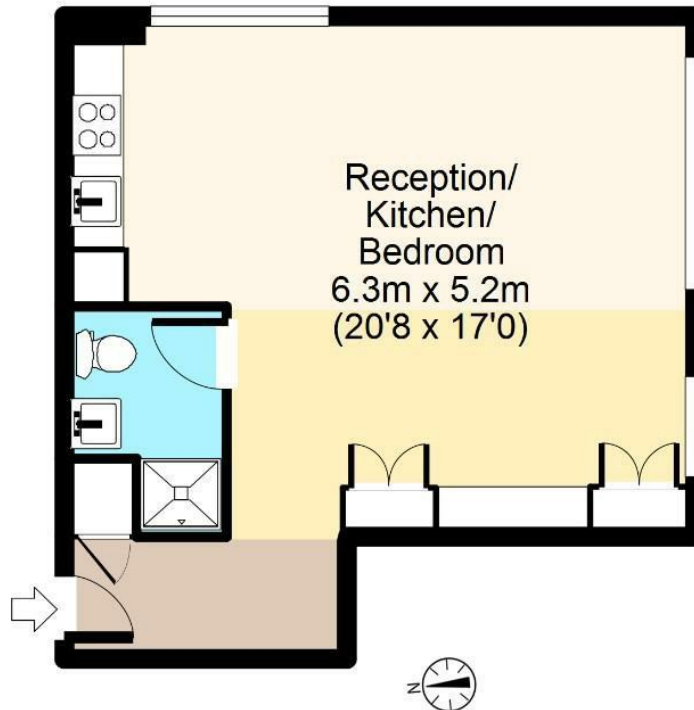




Bishops Square, E1



First Floor



Total area: approx. 36 sq. metres (387 sq. feet)
For illustration purposes only - not to scale
www.lpaplus.co.uk

IMPORTANT NOTICE - These particulars have been prepared in good faith and they are not intended to constitute part of an offer or contract. We have not performed a structural survey on this property and the services, appliances and specific fittings have not been tested. All photographs, measurements, floor plans and distances referred to are given as a guide and should not be relied upon.

BUTLER & STAG

☎ 020 8102 1236

🏠 508 Roman Road, Bow, London, E3 5LU

✉ bow@butlerandstag.com

www.butlerandstag.uk